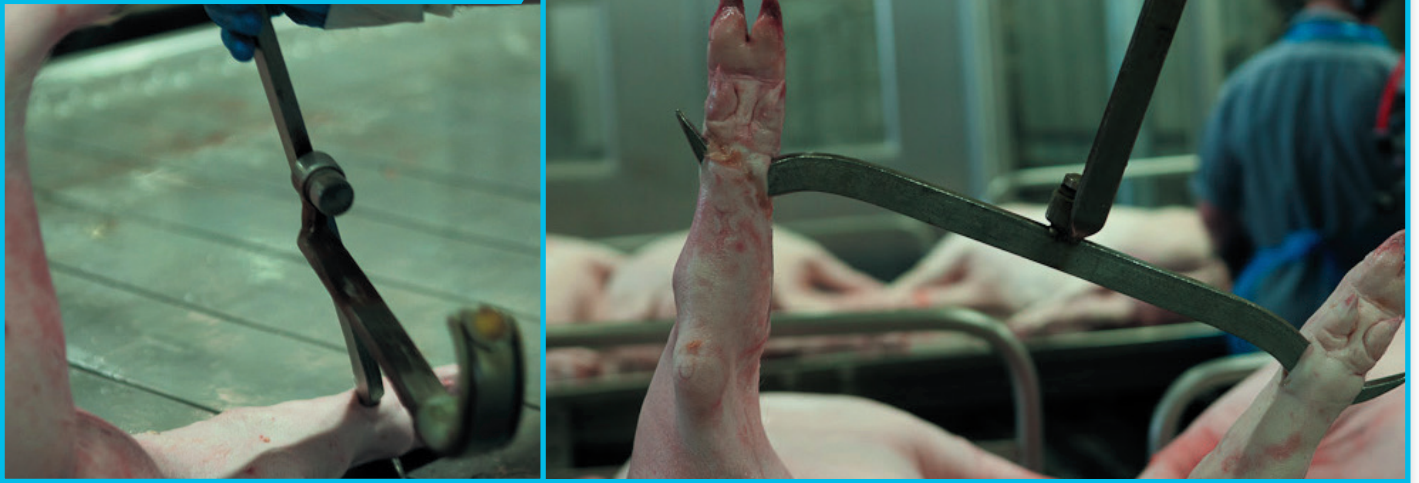


## Gambrel table



## Ergonomic design takes the strain out of gambrelling!

For improving total health and safety conditions for the operator(s), the legs on the gambrel table are all height adjustable (+/-65 mm/2.56") and positioned relatively away from the outer edge of the table, giving optimum work space and mobility to the operator(s).

### Hygiene

The gambrel table is designed according to the strictest hygiene demands and provides easy access for effective manual cleaning.

### Options

Mounting of an orientation unit to ensure correct positioning of the pigs on the gambrel table is an option.

### Why the gambrel table!

- Improved hygiene, time savings, energy efficient and water usage with easy cleaning access
- Minimization of work injuries and higher operator retention due to improved work conditions for gambrel operator
- Sturdy and sophisticated design ensures low maintenance costs



## Safety and legal requirements

The gambrel table is CE approved and designed to meet the strictest demand on health and safety.



## Technical data

Weight kg/lbs	Dimension (mm/in.) up to	Number of pigs	Motorpower in kW 3x400V/50Hz*	Water supply, cold water at 3 bar m <sup>3</sup> /h
1,500/3,306	7,000x1,600x700 275x63x27"	< 500 pigs per hour	1.1	1.1
1,750/3858	8,500x1,600x700 334x63x27"	> 500 pigs per hour	1.5	1.1

\*Other voltages and frequencies are available.

Technical data may be subject to changes

## Contact

CN: [shanghai@frontmatec.com](mailto:shanghai@frontmatec.com)  
Phone: +86 215 859 4850

DK: [kolding@frontmatec.com](mailto:kolding@frontmatec.com)  
Phone: +45 763 427 00

NL: [rijssen@frontmatec.com](mailto:rijssen@frontmatec.com)  
Phone: +31 886 294 000

UK: [birmingham@frontmatec.com](mailto:birmingham@frontmatec.com) [frontmatec.com](http://frontmatec.com)  
Phone: +44 121 313 3564

DE: [beckum@frontmatec.com](mailto:beckum@frontmatec.com)  
Phone: +49 252 185 070

ES: [barcelona@frontmatec.com](mailto:barcelona@frontmatec.com)  
Phone: +34 932 643 800

RU: [moscow@frontmatec.com](mailto:moscow@frontmatec.com)  
Phone: +7 495 424 9559

US: [kansascity@frontmatec.com](mailto:kansascity@frontmatec.com)  
Phone: +1 816 891 2440