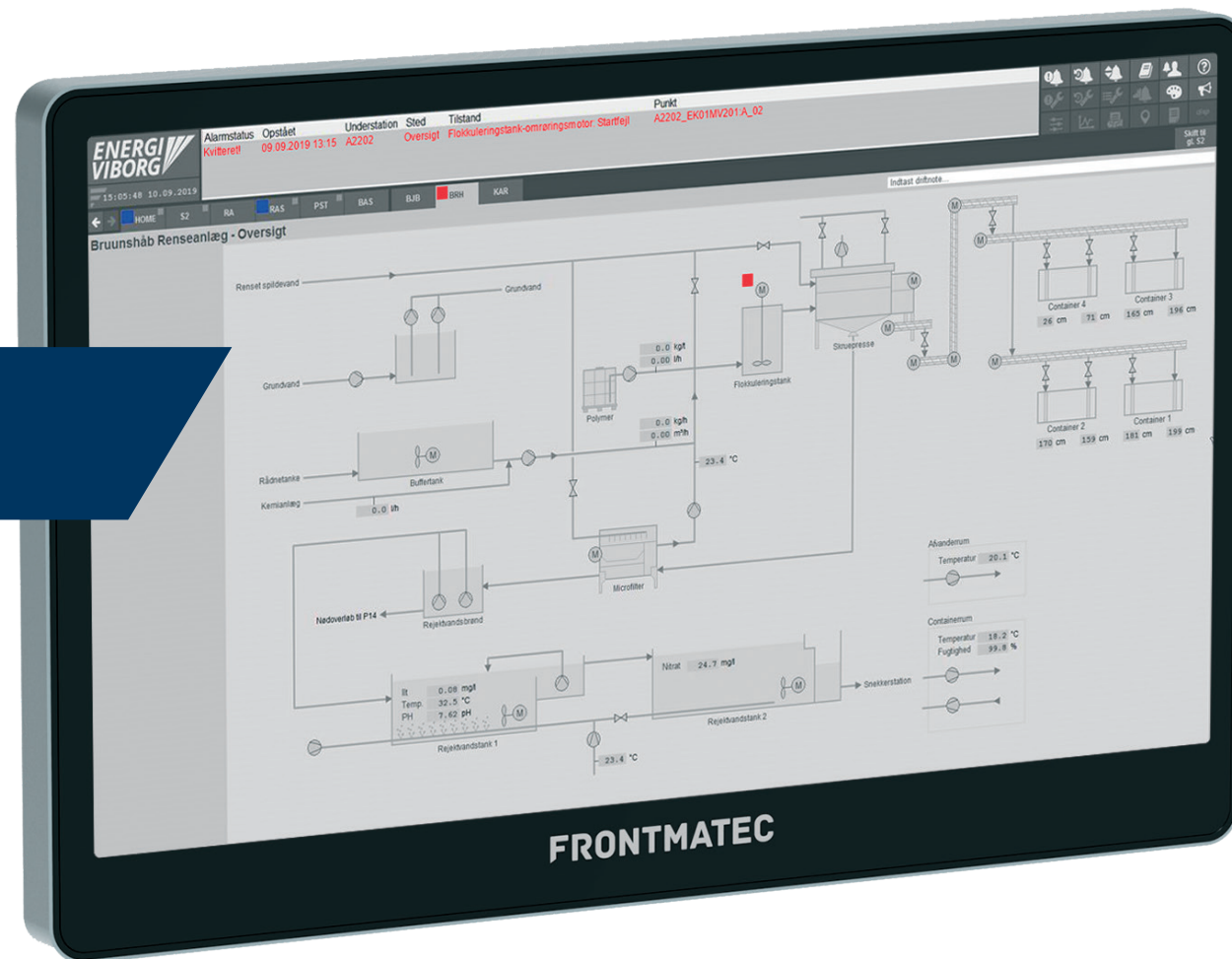


FRONTMATEC

Controls S2





FRONTMATEC

Flexible robust software and automation solutions

Frontmatec develops and offers customized solutions for automation in the supply, manufacturing and food industry. We are a global company founded in 1931. Today we have more than 20 offices and 1,400 employees worldwide, making us the market leader in our field.

What is S2?

S2 is a modular SCADA system which contains both a graphical user interface, a database and a flexible setup for communication with other products.

S2 is a complete software package that operates at all our customers. S2 is modular and all modules are always integrated and included in the package.

Tags are easily sorted according to areas, sites, drivers, component types etc. This makes it easy to interact with other systems such as Power BI.

With S2, Frontmatec offers easy and intuitive operation as well as intelligent analysis tools. These tools are able to track trends and find deviations from norms, which provides the framework for targeted action and reasonably informed decisions.

Why S2?

- Turnkey solutions - minimal number of software packages
- All data in open SQL database
- Easy integration with other systems
- Easy and programming-free system configuration
- Always with the option of an all-inclusive service agreement
- Developed in Denmark
- Responsibility in one place
- Data collection included on all tags

Fully open system based on a Microsoft SQL Database

Built more structured and hierarchical than any other SCADA system

First mover on analysis and reporting tools

Meet **the future** with S2

Cost-benefit analysis

Target and document the yield of production optimizations such as energy saving, reduced downtime, streamlined processes and workflow.

The development team behind S2 has developed a series of powerful tools for data analysis, visualization of intuitive dashboards and reports via Microsoft Power BI.

The system can analyze and present data quickly and simple, so that the message is clear to everyone.

Our presentations of deviations, dynamic limits and forecasting is based on statistical models and large amounts of historical operating data.

Create an overview

Using Power BI, Frontmatec provides one overall overview of deviations and trends for all of your SCADA database.

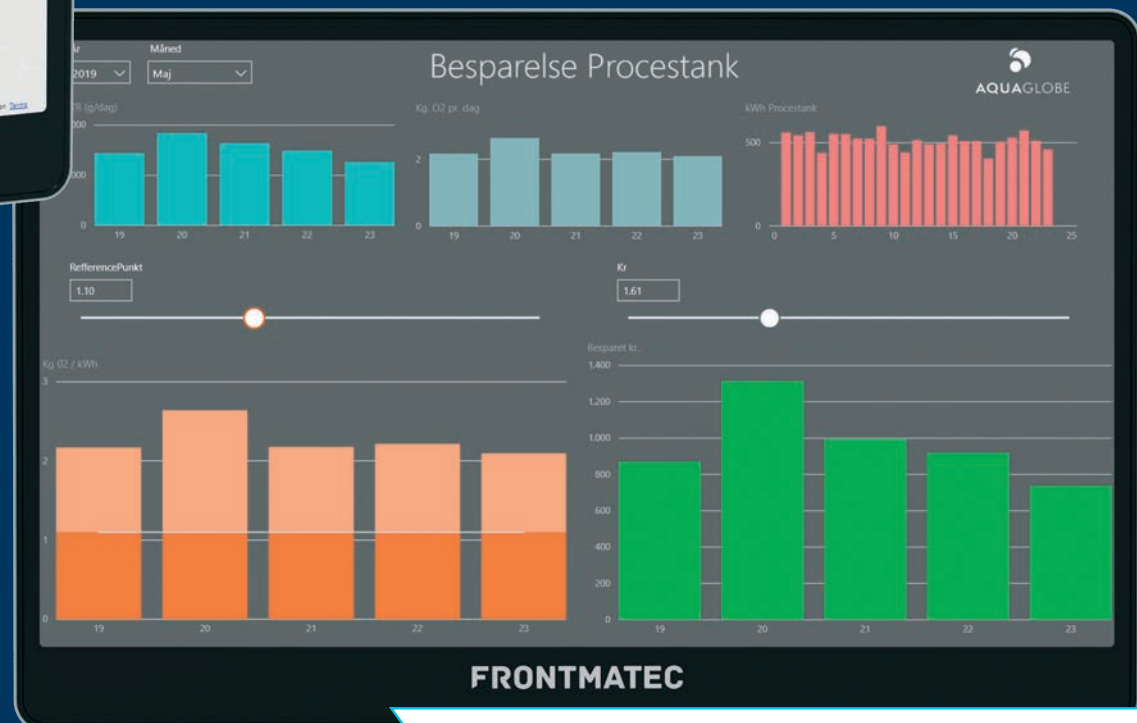
Whether focusing on optimizing economy, operations, maintenance or environment, it is possible to extract key figures, not just from S2, but across many systems.

With S2 Power BI you get dynamic deviation limits and forecasts

Power BI also analyzes across systems



Operational BI solution based on the S2 platform



Documented savings after investment from Skanderborg Forsyning

Be able to predict your maintenance

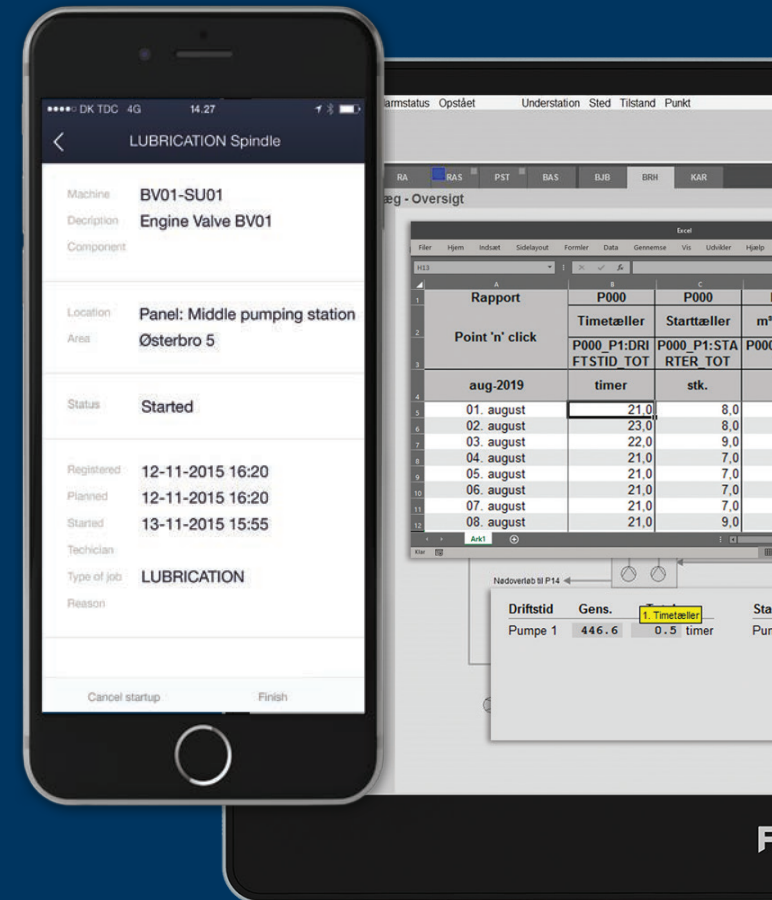
Achieve a favorable operation of your plant

Achieve safe and economical maintenance of your plant with S2.

Scheduled maintenance can be based on every conceivable situation, such as consumption, date/time or alarms. Jobs can be generated automatically in case of for example lower efficiency or prediction.

New jobs can also be created directly from the component or from alarm and event lists.

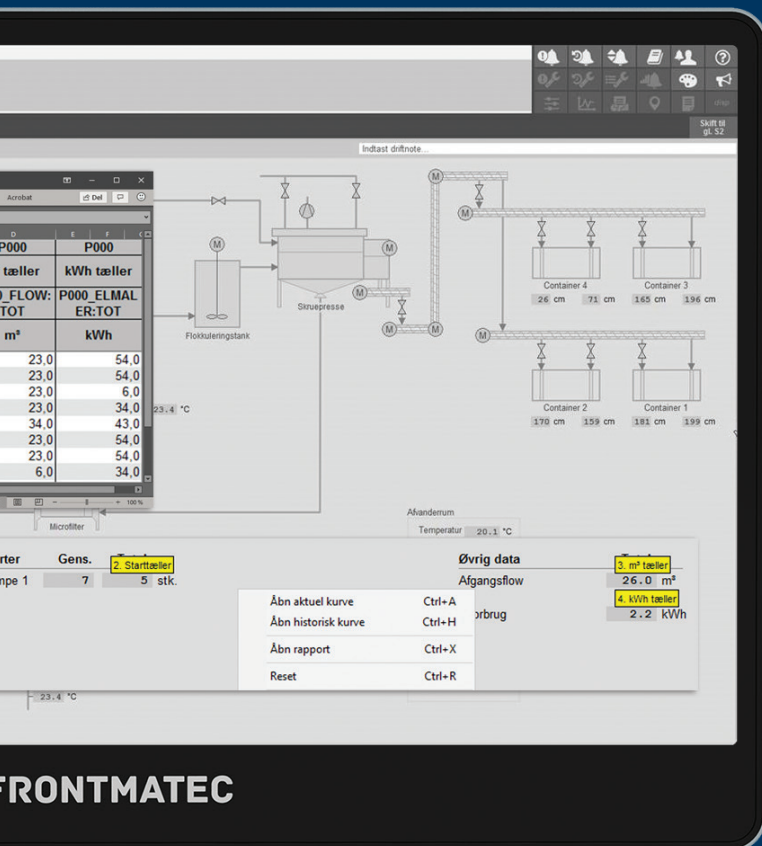
Take S2 maintenance with you on the go. Our mobile app itself finds jobs in the area using GPS coordinates based on where you are.



S2 has an integrated construction register and maintenance

The S2 job app itself finds current maintenance jobs near you

S2



FRONTMATEC

S2 - High Performance HMI for quick and accurate overview

Standardization throughout the entire food chain

Get a quick overview with HP HMI

The ISA101 provides you with an optimized user layout that gives a quick and simple overview of your current operating situation.

It ensures that you do not miss critical alarms or conditions.

Optimized user interface

The layout does not compromise with:

- PI chart style images
- Consistent and minimal use of colours
- Colours "only" for alarms or warnings
- Important analog values are displayed with a reference bar
- Logical and consistent navigation and flow direction
- Flat images (without 3D effects)

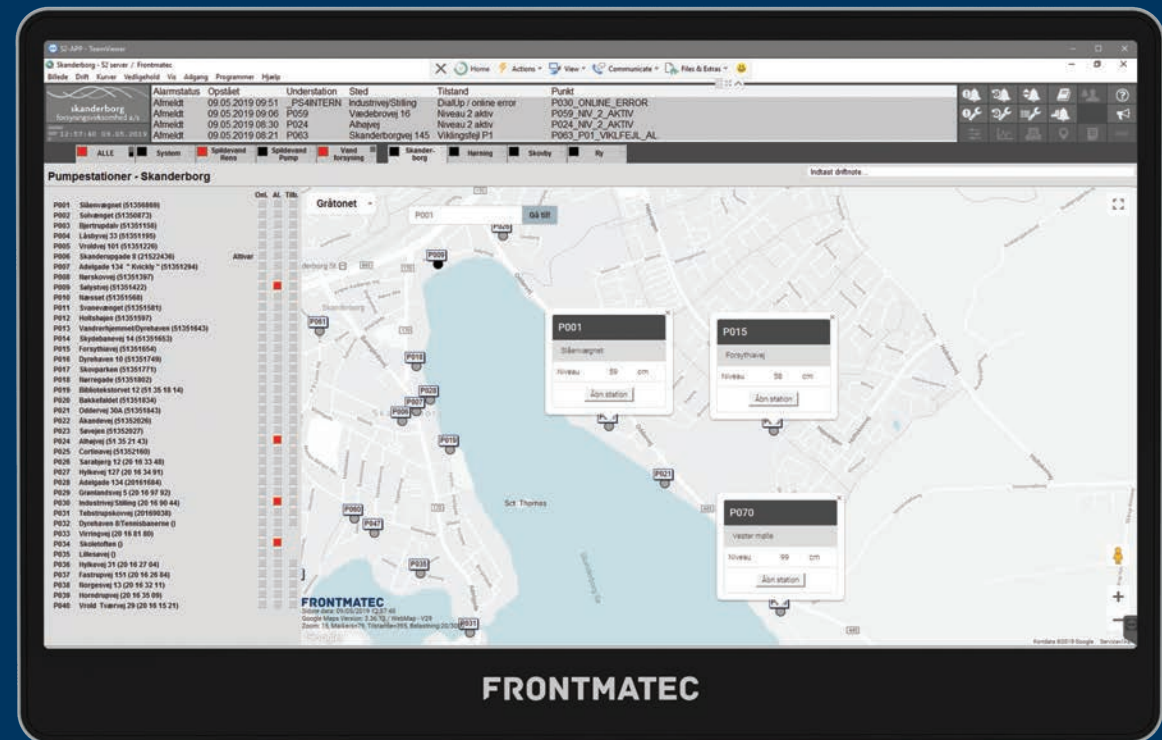
With HP HMI you get an optimized layout that presents deviations from normal

WebMap - integrated map solution in S2

WebMap is an interactive map solution integrated directly into S2. The map offers a variety of tools that can be configured and customized as needed:

- **Live Status:** View alarms/status of stations and pipelines through value displays, symbols and colours
- **Zoom:** It is possible to zoom and view satellite maps, streetview etc.
- **Operation:** As the map solution is fully integrated, the system images are opened with a single click on the map
- **Search function:** The built-in search function allows you to zoom down to a station quickly both by station name and address
- **Standardized templates:** All stations and maps are easily configured via templates to suit individual needs and requirements
- **Automatic update:** WebMap uses the logical area structure of S2 for station and map creation. Import or enter coordinates for a station, select a template and with a single tick the station is created on the map automatically
- **In addition:** Camera integration, piping drawing tools, website integration and much more

Active dynamic map with search and zoom features

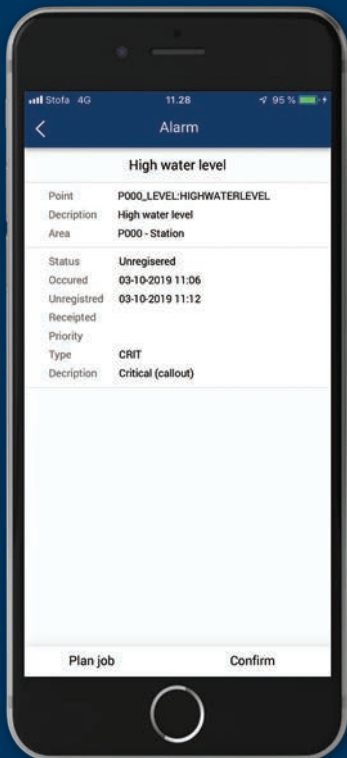


WebMap - integrated map solution in S2

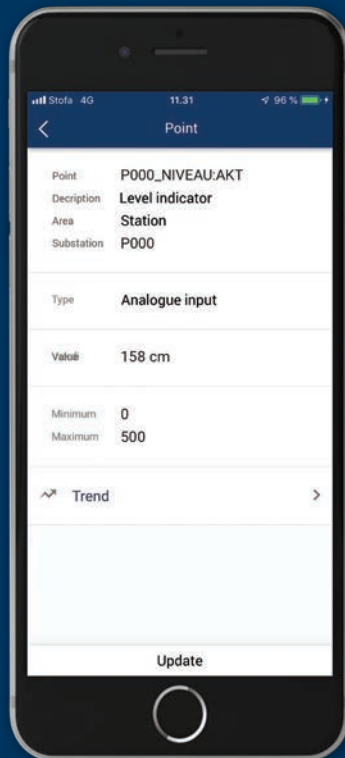
S2 at your fingertips

S2 has all the features collected in the same app

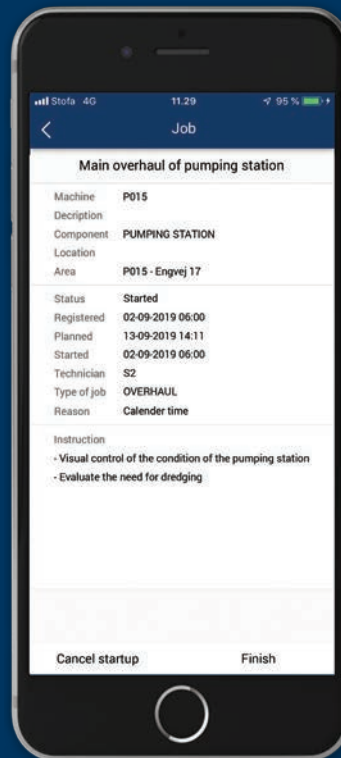
Alarm app



Tag app



Job app



Take S2 with you on the go

Frontmatic has developed a number of apps that make it possible to follow and operate S2 via mobile devices.

The applications are available on smartphones based on Apple's IOS and Google's Android system.

The following features are available in the app:

- Alarms
- Maintenance
- Tag management
- Registration

With the S2 app, you always have the best features at your fingertips. Our applications are flexible and can therefore be tailored to your needs and desires. Changes and additions are made directly from S2.

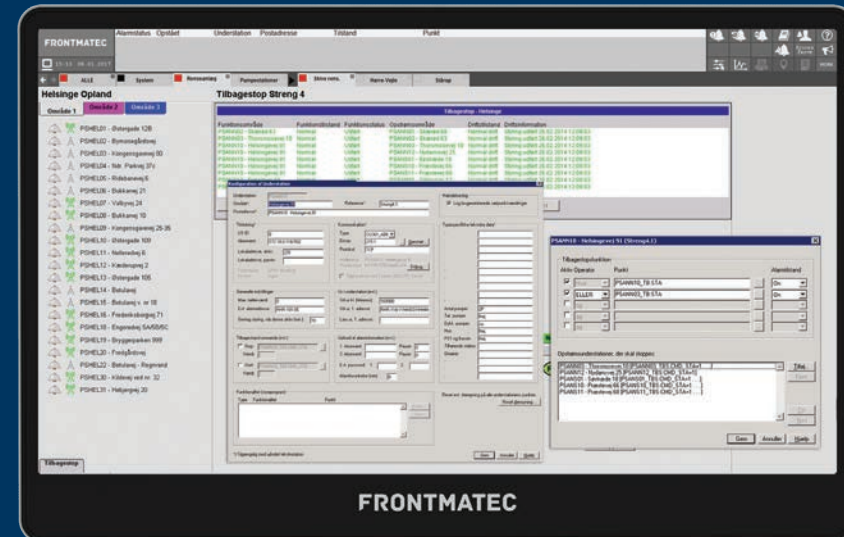
Special modules

Flow stop and control module

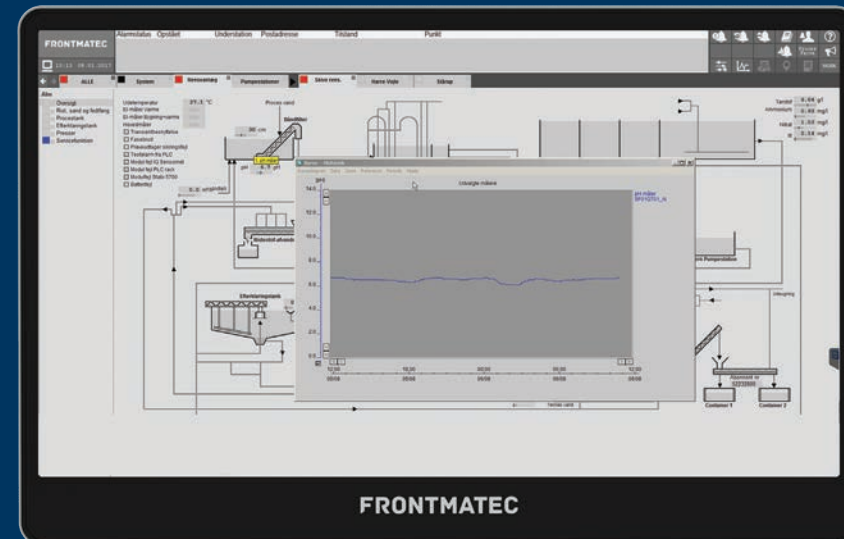
With the S2 integrated modules it is possible to create a comprehensive management strategy.

The strategy is easily configured and maintained on an ongoing basis and creates connection across plant parts, geographical location, PLCs, meters and controls of various makes.

In this way, the condition of a location in the plant can be reflected directly in the operation elsewhere at the plant.



Flow stop



Point & Click

Make your own strategies "on the fly" and get it simultaneously documented as build

Special modules

Notes and ad hoc view

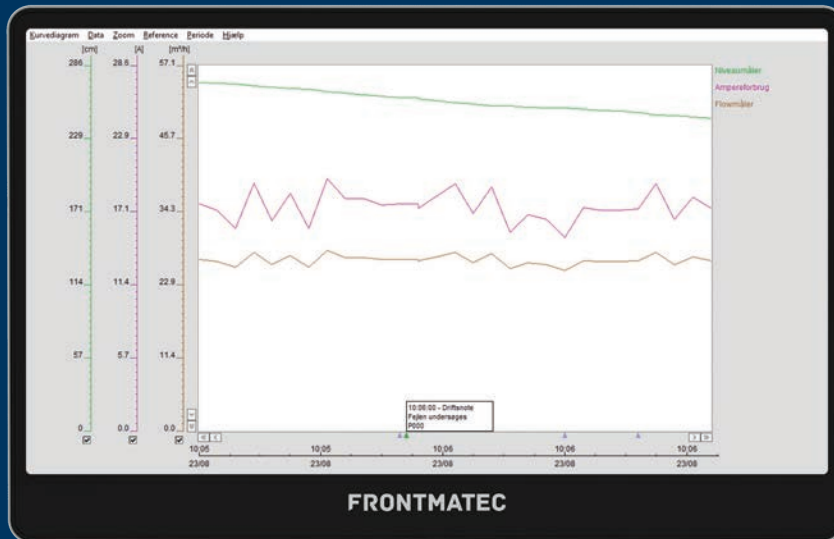
With S2 it is easy for you as a user to log/save a large amount of notes and then find and view them again.

It is possible to add notes to images, components, general notes or to a memo that is visible only to the user himself. Notes can be searched and found in the event log just like all other events.

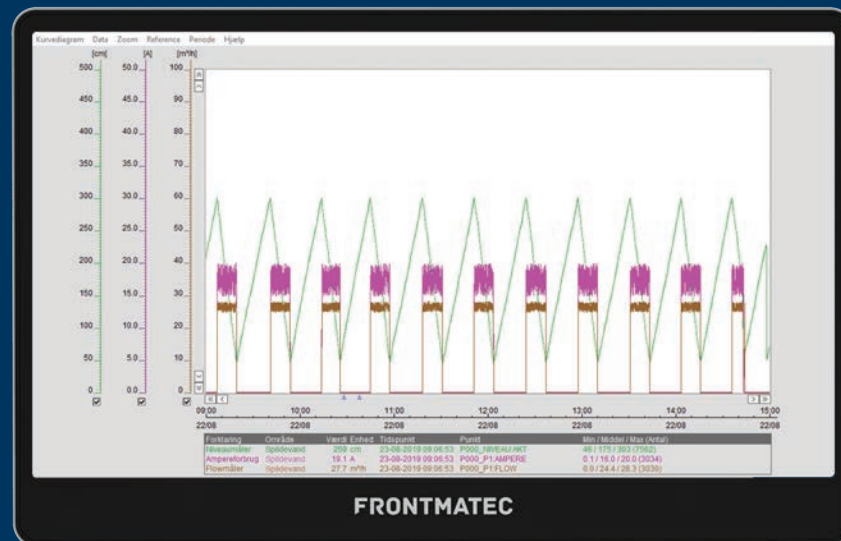
With S2 you can also insert notes for a chart which is displayed directly in the chart diagram

Point & Click allows the user to open charts or reports on the values from images or via Standard View. In this way, the user can always be presented the values that are important at this very moment

Create you own charts and reports when you need it



Notes



Ad hoc view

S2

Reporting

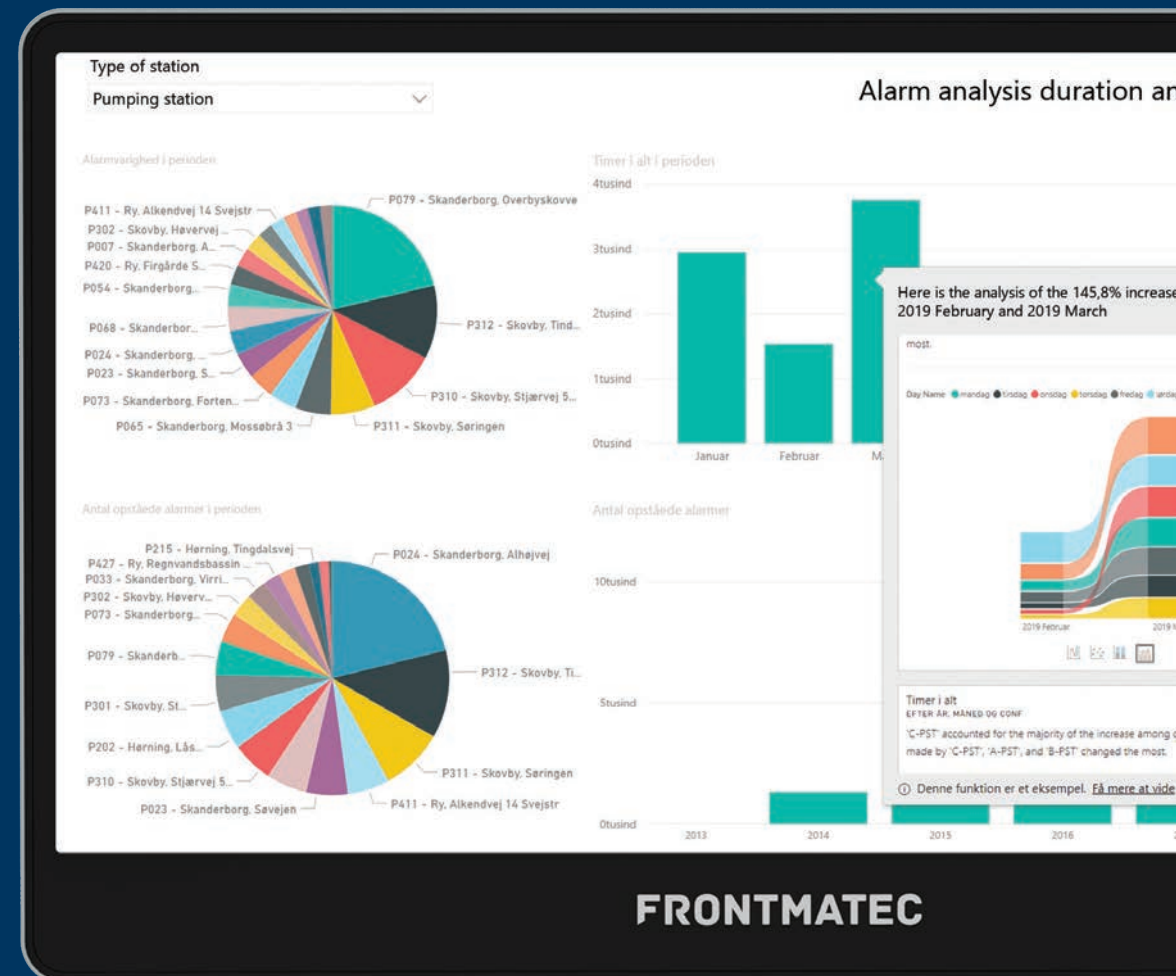
S2

S2 can present reports directly in Excel, in Power BI or SSRS format.

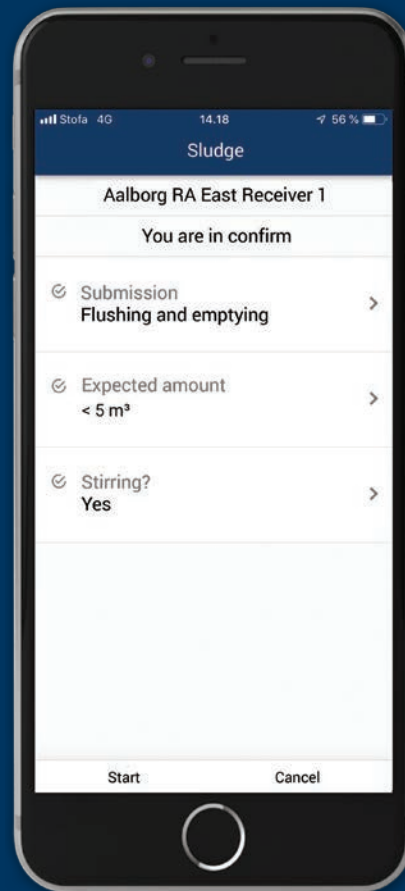
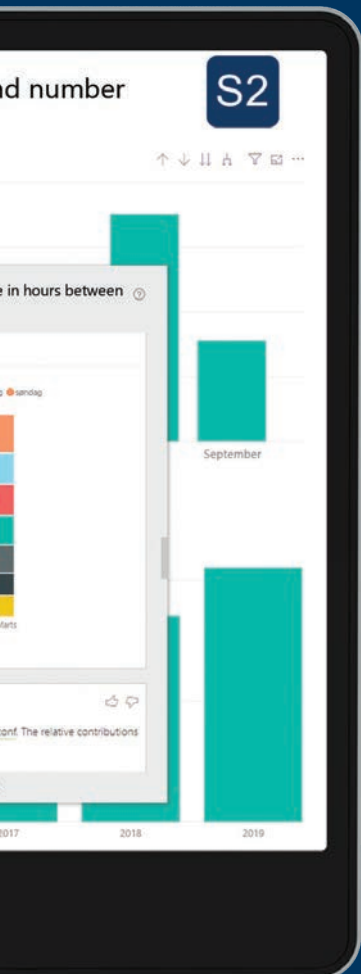
Power BI offers a complete range of tools and services for you as an S2 user to help you create, implement and manage reports for your organization. The Report module contains a programming tool that enables you to extend and customize the reporting functionality. Through S2, you can also retrieve data into Excel via a number of advanced report functions combined with graphical illustrations such as charts. S2 can also collect historical data from the SQL database, such as hour and day values, as well as minimum and maximum values.

The new features make it easy to create ad hoc reports in the S2 manager.

S2 is the most flexible SCADA system compared to reporting



Ad hoc curves/reports



App registration

S2 comes with a number of useful features and solutions - including our S2 app.

With very little configuration work, the S2 app is customized for your particular purpose and integrated with both management and reporting.

The app can be used to register anything. For example in connection with the delivery and registration of wastewater, water stand or change of watch.

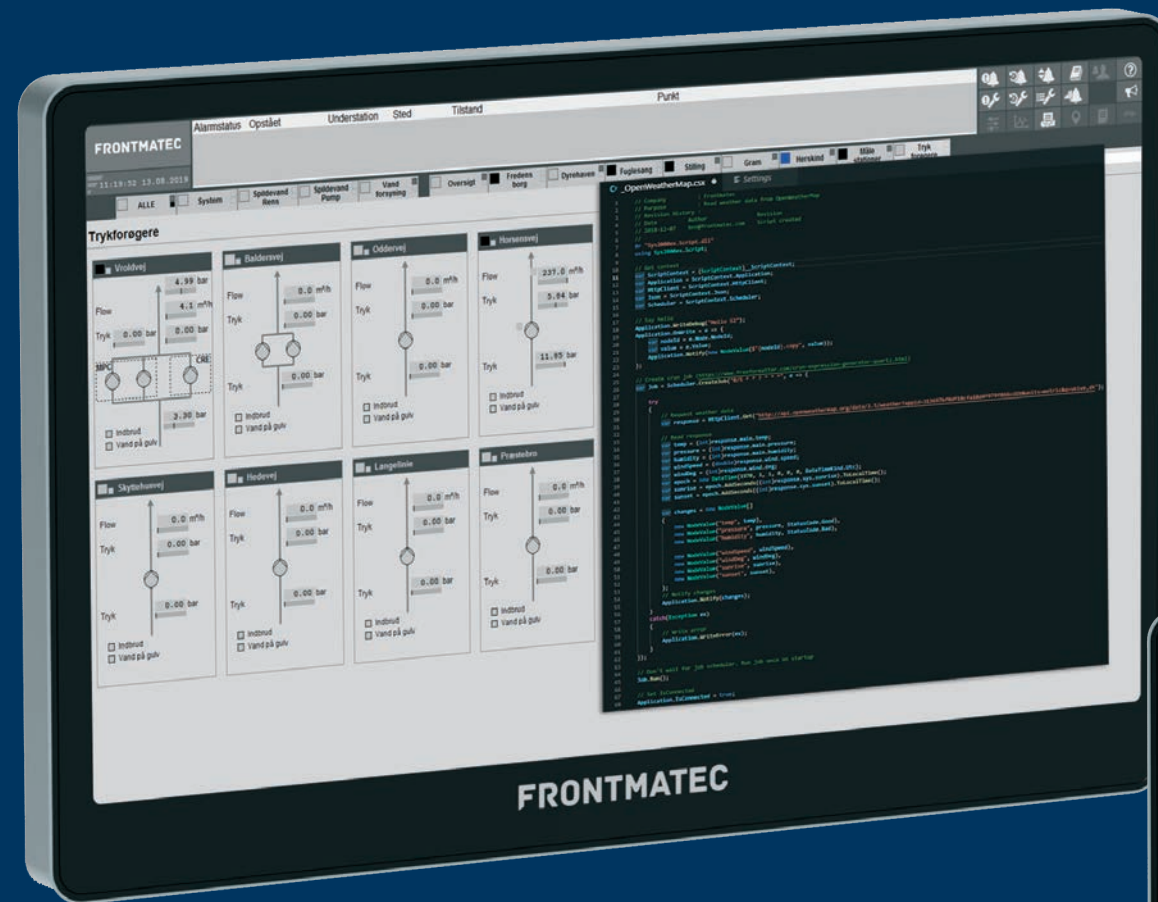
S2 now also includes C# Scripting

Time is running out of the old scripting languages (for example VBA), and with C# Scripting, S2 opens up easy and transparent integration with other software modules and the opportunity to develop directly in S2, without compromising the security and stability of the core of S2.

Since Microsoft introduced .Net, the development language C# has quickly become part of the de facto programming standard of the automation industry and as most programmers today know the C# language, there is a large number of complete modules. Modules that can now be freely composed and integrated directly into S2.

This means that your S2 supplier and other system houses now have the opportunity to extend your S2 platform with add-on modules, drivers and other functionality via C#.

Of course, our development team continues to develop ALL new modules with buttons and menus directly in the core. Thus, C# Scripting is just an option that is available when very special needs occurs.



C# Scripting

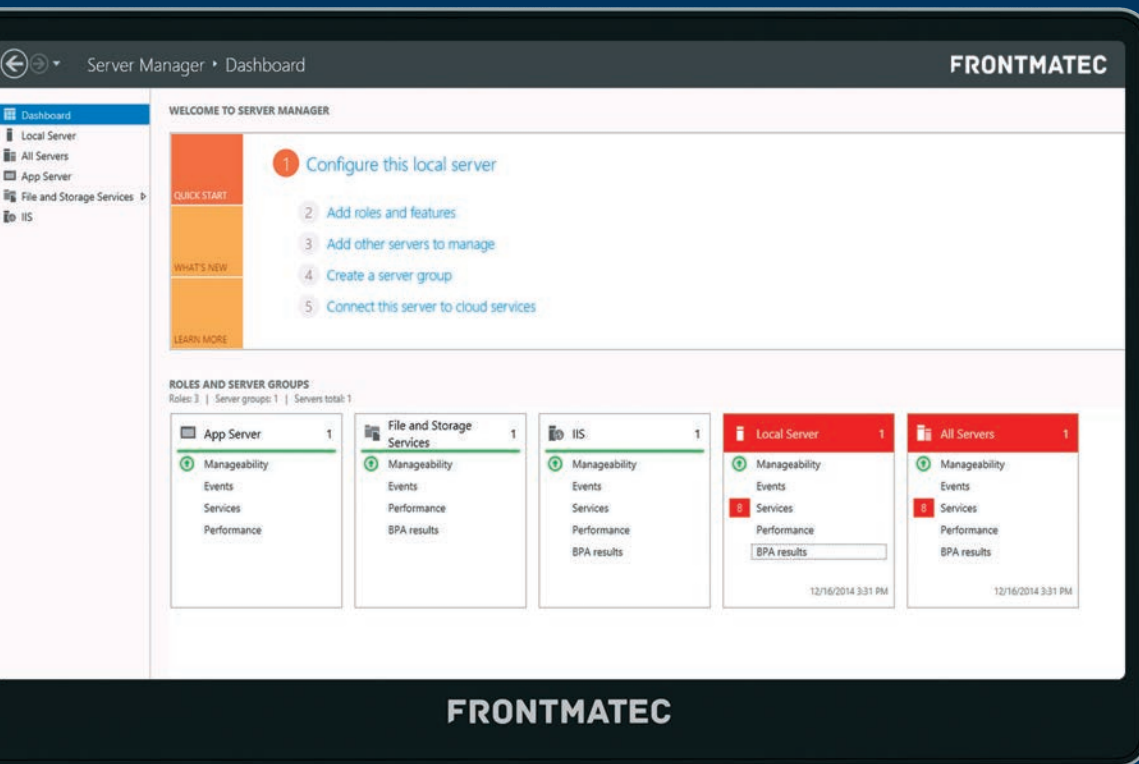
Patch management of servers and SCADA

At Frontmtec, we have a strong focus on our customers being able to produce as optimally as possible, and we know how critical downtime is. That is why we are always ready to help when production is in an error condition.


We provide service and patch management of your servers and SCADA software, and take responsibility for a fully functional system, ensuring that you have the latest technology, that the user can always receive support and that no unforeseen costs are incurred for the user.

We offer technical assistance 24 hours a day - all days of the week. We can provide assistance within 2 hours of the call (excluding driving time). As part of the agreement, the called technician prepares a report describing the error and what has been done to solve the problem.

A service contract may include servers, peripheral equipment (clients, UPS, NAS), additional HW warranty, network configuration, server environment installation, WM ware, server patch management, SCADA environment, etc.



FRONTMATEC



Frontmatec Controls covers the group's solutions within MES, industriel IT, SCADA and automation solutions. Frontmatec develops world-leading customized solutions for automation in the food industry, other hygiene sensitive industries and the utilities industry. Frontmatec develops and offers customized solutions for automation in the supply, manufacturing and food industry. We are a global company founded in 1931. Today we have more than 20 offices and 1,400 employees worldwide, making us the market leader in our field.

Frontmatec A/S
Østerbro 5
7800 Skive
Phone: +45 975 250 22
controls.frontmatec.com

Odense
Hvidkærvej 2c

Smørum
Hassellunden 9

Stilling, Skanderborg
Niels Bohrs Vej 17b

Sønderborg
Nørrekobbøl 11