



TEAMING UP WITH YOUR  
SERVICE SPECIALISTS

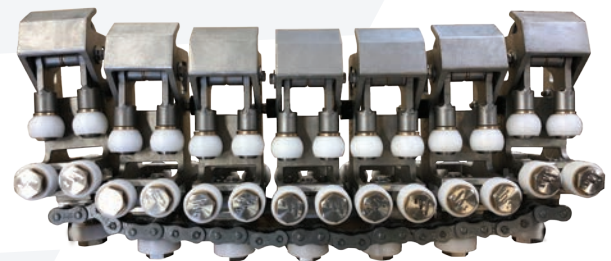
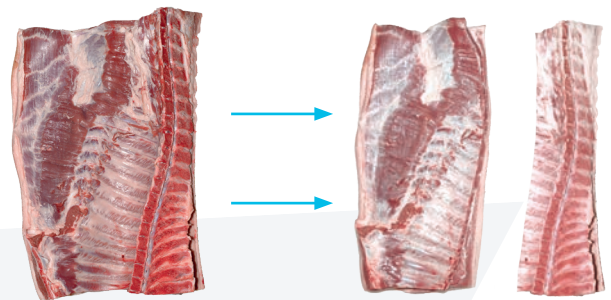
## AMDM Chain renovation program automatic middle splitter

To achieve best price for meat it is vital that the exact fixation of the spine is retained, as this ensures a smooth operation with accurate measurements and precise cuts.

The chain is the centerpiece in this process and you have the option to benefit from our chain renovation program, providing you with the opportunity to secure improved yield and at the same time prolong the life-time of your equipment.

Maximize your up-time by stocking a chain and when needed ship the worn unit to us and your chain specialists will take care of the renovation.

For more information, please do not hesitate to contact us.



### Contact

Central/Eastern Europe  
Phone: +49 252 185 070  
E-mail: [as.ce@frontmatec.com](mailto:as.ce@frontmatec.com)

Central/Eastern Europe, Poland  
Phone: +48 227 345 551  
E-mail: [as.ce@frontmatec.com](mailto:as.ce@frontmatec.com)

Northern Europe  
Phone: +45 36 999 099  
E-mail: [as.ne@frontmatec.com](mailto:as.ne@frontmatec.com)

Southern Europe  
Phone: +34 932 643 800  
E-mail: [as.se@frontmatec.com](mailto:as.se@frontmatec.com)

Russia  
Phone: +7 495 424 9559  
E-mail: [as.ru@frontmatec.com](mailto:as.ru@frontmatec.com)

Western Europe  
Phone: +31 886 294 000  
E-mail: [as.we@frontmatec.com](mailto:as.we@frontmatec.com)