



TEAMING UP WITH YOUR
SERVICE SPECIALISTS

How to have an optimal production flow on your Duoplan conveyor

Increase your profit and ensure an optimal production flow by having your certified Frontmatec specialist verify that the switch junction is free of play, along with good condition and tension of the chain for an efficient operation.

Obtain prolonged life-time with the help of skilled and experienced technicians, who ensure the proper greasing of the chain and slide rails, as well as confirming the performance and operational condition of gears and bearings.

Stay prepared for the unexpected by stocking critical spare parts for the daily operation, such as Duoplan fingers, roller chain, gears and bearings.

Additional product solutions for your Duoplan conveyor

Recommended service for maximum
operation efficiency

Min. 1 service a year



SERVICE
AGREEMENT



SPARE PARTS
PACKAGE



INSPECTION



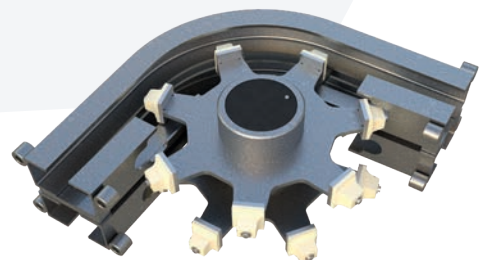
TECHNICAL
SUPPORT 24/7



SMART
GLASSES



UPGRADES



Duoplan turn corner



Duoplan conveyor with gambrel

Contact

Central/Eastern Europe
Phone: +49 252 185 070
E-mail: as.ce@frontmatec.com

Central/Eastern Europe, Poland
Phone: +48 227 345 551
E-mail: as.ce@frontmatec.com

Northern Europe
Phone: +45 36 999 099
E-mail: as.ne@frontmatec.com

Southern Europe
Phone: +34 932 643 800
E-mail: as.se@frontmatec.com

Russia
Phone: +7 495 424 9559
E-mail: as.ru@frontmatec.com

Western Europe
Phone: +31 886 294 000
E-mail: as.we@frontmatec.com