



TEAMING UP WITH YOUR SERVICE SPECIALISTS

How to maintain **uniform products** on your automatic chine bone remover

Achieve **yield improvement** by having your certified Frontmatec service specialists perform the individual bar-adjustments in the infeed arrangement, that is essential for accurate fixation of the spine and for further measuring and processing of the pork middles.

Have a **smooth operation** and achieve **best price for meat** by ensuring that the ASSM keeps performing precise and clean cuts. Your experienced Frontmatec technicians verify the condition and the tension of the gripper chain and the function of the air cylinders together with an exact alignment of the knives.

Stay **prepared for the unexpected** by having a renovation solution for the gripper chain and stocking the most used spare parts such as knives, air cylinders, gears and motors.

Additional product solutions for your ASSM

Recommended service for maximum operation efficiency

Min. 1-2 services a year



SERVICE AGREEMENT



SPARE PARTS PACKAGE



INSPECTION



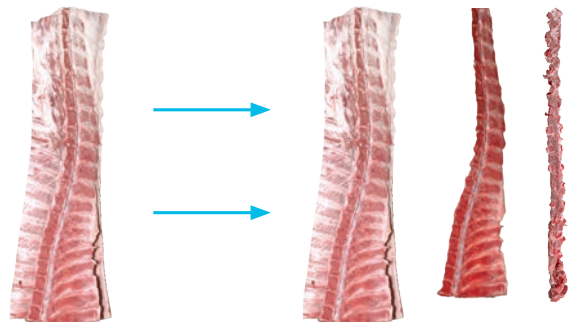
TECHNICAL SUPPORT 24/7



SMART GLASSES



SOFTWARE



Contact

Central/Eastern Europe
Phone: +49 252 185 070
E-mail: as.ce@frontmatec.com

Central/Eastern Europe, Poland
Phone: +48 227 345 551
E-mail: as.ce@frontmatec.com

Northern Europe
Phone: +45 36 999 099
E-mail: as.ne@frontmatec.com

Southern Europe
Phone: +34 932 643 800
E-mail: as.se@frontmatec.com

Russia
Phone: +7 495 424 9559
E-mail: as.ru@frontmatec.com

Western Europe
Phone: +31 886 294 000
E-mail: as.we@frontmatec.com