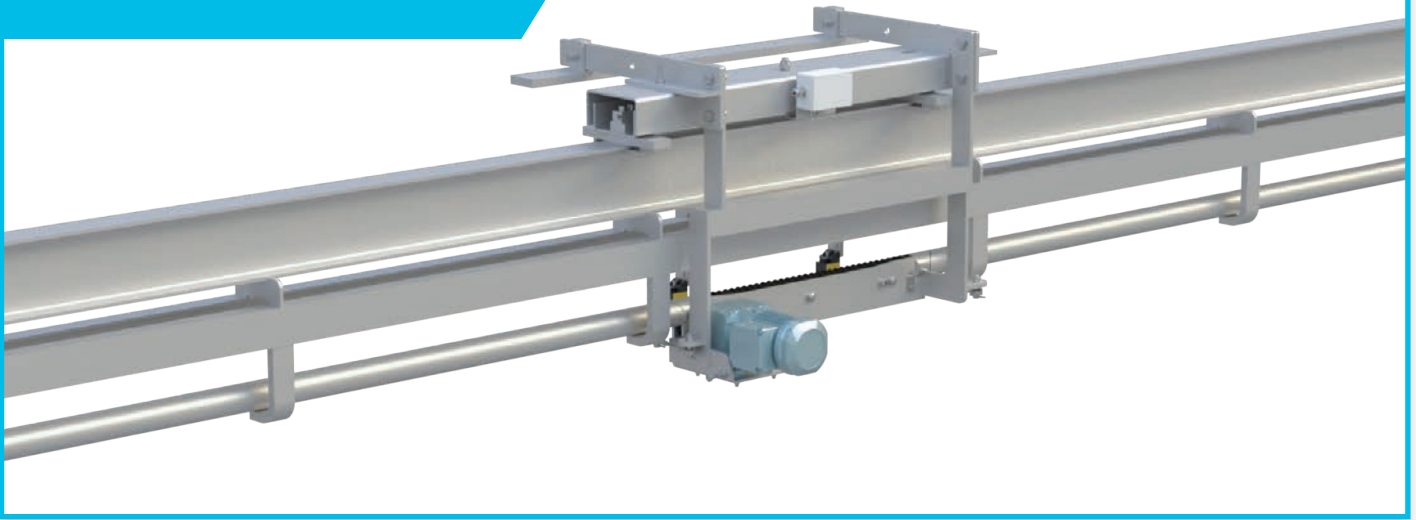


Overhead motion scale



Before and after the chill room

To ensure a smooth operation with precise product weighing, the motion scale is installed in the existing transport conveyor, ensuring the exact alignment of the scale rail with the tube rail.

Pre-conditions

- Made of stainless steel
- Containing a weighing part and a weighing conveyor
- Easily mounted
- Load cells are IP66 approved
- Suitable for most rail works
- Available for twin track and tube rails

Safety and legal requirements

For highest possible protection against dirt, grease and moisture the two load cells are mounted above the conveyor between the two U-profiles in the weighing part.

Calibration & legal for trade

Achieve guarantee for precise weighing and best price for meat with a service agreement, covering yearly maintenance, calibration and certification.

Service is performed by authorized and certified Frontmatec technicians and the scale is built with legal to trade components.

Options

Type	Lenght mm	Rail type	Weighing capacity kg	Minimum load kg	Lowest readable value kg
5300000210	608	Tube rail	300	20	0.1
5300000208	668	Tube rail	600	20	0.2
5300000209	728	Tube rail	300	20	0.1
			600	20	0.2
5300000077	600	Twin track	300	20	0.1
			600	20	0.2
5300000076	720	Twin track	300	20	0.1
			600	20	0.2



Indicator for motion weighing

Especially designed for the meat industry the housing consists of stainless steel with a clear display, easy and logical to use and will provide a continuous read out of weighing data.



This indicator is standard supplied with 3xRS232 bi-directional serial interfaces, 2xUSB and 1xTCP/IP interface.

Indicator Avery ZM510, type 5300001220

- Water proof (IP69K)
- Height of display 22 mm
- No plug connections - waterproof wire transits
- Continuous read out of weighing data
- Including zero setting, tare and a large QWERTY keypad
- With the key board a manual tare can be entered
- Free programmable with LUA for own programs
- Supporting DHCP client/server and Ethernet sockets
- Internal DSD (Alibi) module

Options

- SD card 64 mB as database module for 100,000 registrations

Contact

Central/Eastern Europe
Phone: +49 252 185 070
E-mail: as.ce@frontmatec.com

Central/Eastern Europe, Poland
Phone: +48 227 345 551
E-mail: as.ce@frontmatec.com

Northern Europe
Phone: +45 36 999 099
E-mail: as.ne@frontmatec.com

Southern Europe
Phone: +34 932 643 800
E-mail: as.se@frontmatec.com

Russia
Phone: +7 495 424 9559
E-mail: as.ru@frontmatec.com

Western Europe
Phone: +31 886 294 000
E-mail: as.we@frontmatec.com