

## SERVICE SOLUTIONS // HOW TO

# HOW TO USE YOUR LEAF LAD LOOSENER

### Loose the membrane on both sides

1. Take your thumb and place it just above the breastbone, push the thumb inside the leaf and break it from the diaphragm
2. Cut the sides free by placing a cut along the breastbone and ribs - approx 5-10 cm in length



### Loose Ensure both kidneys are cut and slipped

1. Cut from the top to the bottom of the kidneys
2. Grab the kidneys at the top and squeeze them so they come out of their natural membrane



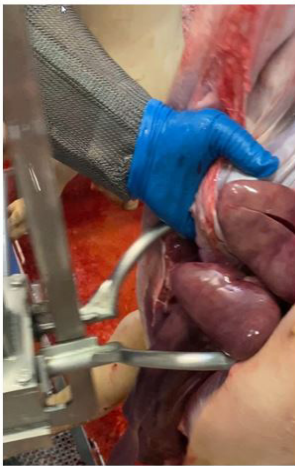
### Cut kidneys down and loosen leaf on both sides of the tenderloin

1. Grab both kidneys and cut into the lower edge of the tenderloin
2. Cut the diaphragm free to both sides - approx 5 - 10 cm on each side



### Cut kidneys down and loosen leaf on both sides of the tenderloin

1. With the left/right hand grab under the loosened diaphragm
2. Push the Leaf Lad Loosener under the diaphragm and push both buttons down until it reaches the top of the belly



*Video showing process*

## CONTACT

**Central/Eastern Europe**  
+49 252 185 070  
as.ce@frontmatec.com

**Northern Europe**  
+45 36 999 099  
as.ne@frontmatec.com

**Poland**  
+48 227 345 551  
as.ce@frontmatec.com

**Southern Europe**  
+34 932 643 800  
as.se@frontmatec.com

**Western Europe**  
+31 886 294 000  
as.we@frontmatec.com