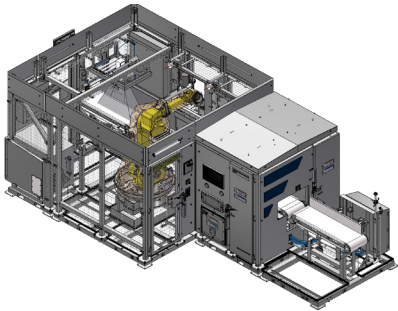


## ROBOTIC BEEF CHINE BONE SAW FRONTMATEC CHINE BONE SAW FOR BEEF RIB OR BEEF STRIP

The industry-leading Beef Robotic Chine Bone Saw, is helping top producers improve yield, maximize throughput, reduce labor dependency, and enhance safety. These are not incremental improvements—they are strategic shifts that drive measurable impact. No one offers more automated solutions for red meat slaughter, cutting, and deboning than Frontmatec.

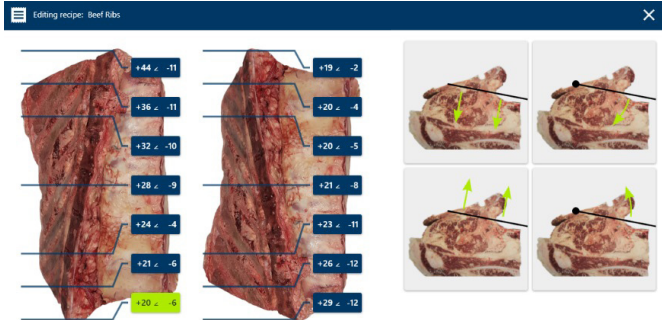
The Frontmatec Robotic Chine Bone saw is now available in beef rib and beef strip configurations. The Robotic Chine Bone Saw delivers unmatched consistency, maximum uptime and yields.



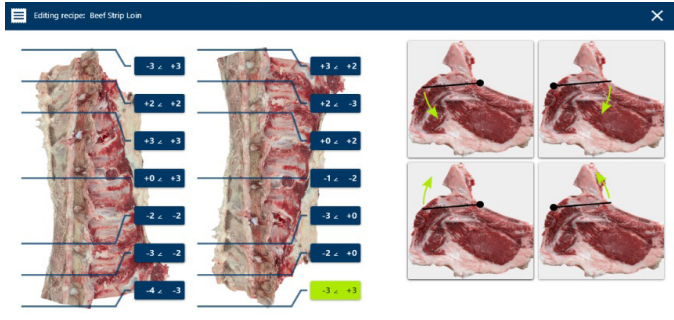
### Exceptional Performance & Payback

- Eliminates safety risks
- Advanced 6-axis robot ensures accurate, consistent and fast cuts
- 850 pieces per hour capacity
- Achieve \$4 to \$9 per head yield increase
- Beef rib and beef strip models are available
- Reduced dependency on labor & training
- Fully adjustable tuning for your ideal cut path and depth

### BEEF RIB



### BEEF STRIP



### CONTACT

Frontmatec  
10800 N Congress Ave  
Kansas City, MO 64153

KansasCity@Frontmatec.com  
816.791.2440  
Frontmatec.com